



---

## *Detention Pond & Landscape Buffer Planting*

---

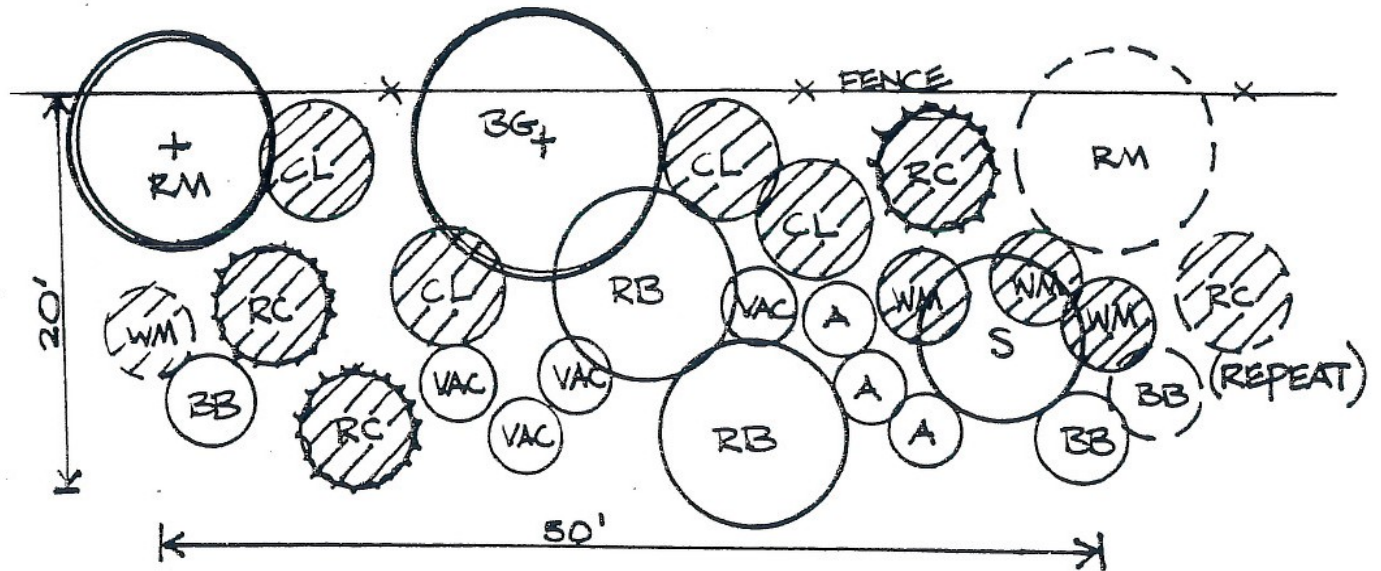
This is a guideline for detention pond and landscape planting

A tree preservation/replacement/landscape plan shall be required as described in the tree preservation ordinance.

Tree preservation/replacement/landscape plans shall be prepared in accordance with the specifications contained in the tree preservation ordinance. At the developer's option, the plan may be combined with other plans such as a general landscaping plan for the project.

Please use the attached detail as a reference.

**LANDSCAPE DETAIL D-1**  
**DETENTION POND LANDSCAPE BUFFER PLANTING**



PLANTS PER 50 LINEAR FEET

OVERSTORY TREES

1 BG- BLACK TUPELO/BLACK GUM  
 1 RM - RED MAPLE

NYSSA SYLVATICA  
 ACER RUBRUM

EVERGREEN TREES

4 CL - CHERRY LAUREL  
 3 RC - VIRGINIA RED CEDAR

PRUNUS CAROLINIANA  
 JUNIPERUS VIRGINIANA

FLOWERING TREES

2 RB - REDBUD  
 1 S - SERVICE BERRY

CERCIS CANADENSIS  
 AMELANCHIER ARBOREA

EVERGREEN SHRUBS

3 WM - WAX MYRTLE

MYRICA CERIFERA

DECIDUOUS SHRUBS

3 A - NATIVE AZALEA (ARBORESCENS, CANESCENS, ETC.)  
 3 BB - AMERICAN BEAUTYBERRY  
 4 VAC - RABBITEYE BLUEBERRY

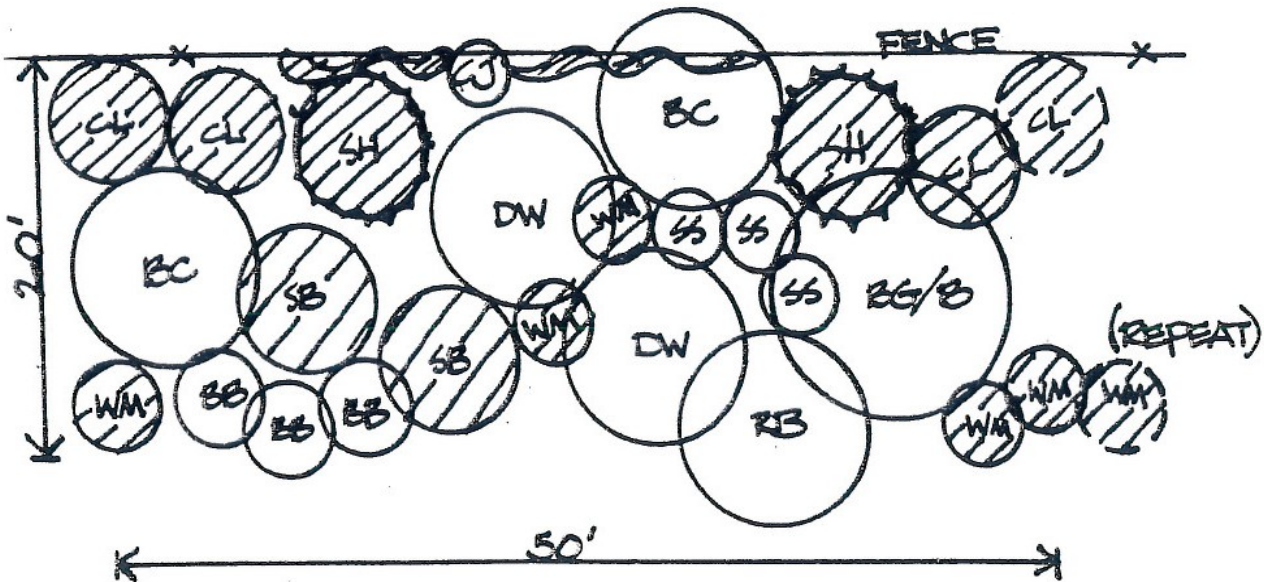
RHODODENDRON SP.  
 CALLICARPA AMERICANA  
 VACCINIUM ASHEII

VINES ON FENCE - CAROLINA JESSAMINE, WINTER CREEPER, TRUMPET HONEYSUCKLE,  
 CROSSVINE, SMILAX

TREES : MINIMUM 2" CAL./6' HT.

SHRUBS : MINIMUM 3 GAL. FULL

**LANDSCAPE DETAIL D-2**  
**DETENTION POND LANDSCAPE BUFFER PLANTING**



**PLANTS PER 50 LINEAR FEET**

**OVERSTORY TREES**

- 2 BC - BALD CYPRESS
- 1 BG - BLACK TUPELO/BLACK GUM
- / B - OR RIVER BIRCH

- TAXODIUM DISTICHUM
- NYSSA SYLVATICA
- BETULA NIGRA

**EVERGREEN TREES**

- 3 CL - CHERRY LAUREL
- 2 SB - SWEETBAY MAGNOLIA
- 2 SH - SAVANNAH HOLLY

- PRUNUS CAROLINIANA
- MAGNOLIA VIRGINIANA
- ILEX x SAVANNAH

**FLOWERING TREES**

- 1 RB - REDBUD
- 2 DW - DOGWOOD

- CERCIS CANADENSIS
- CORNUS FLORIDA

**EVERGREEN SHRUBS**

- 5 WM - WAX MYRTLE

- MYRICA CERIFERA

**DECIDUOUS SHRUBS**

- 3 BB - AMERICAN BEAUTYBERRY
- 3 SS - SWEETSHRUB

- CALLICARPA AMERICANA
- CALYCANTHUS FLORIDUS

**VINE ON FENCE**

- 1 CJ - CAROLINA JESSAMINE

- GELSEMIUM SEMPERVIRONS

TREES : MINIMUM 2" CAL./6' HT.

SHRUBS : MINIMUM 3 GAL. FULL