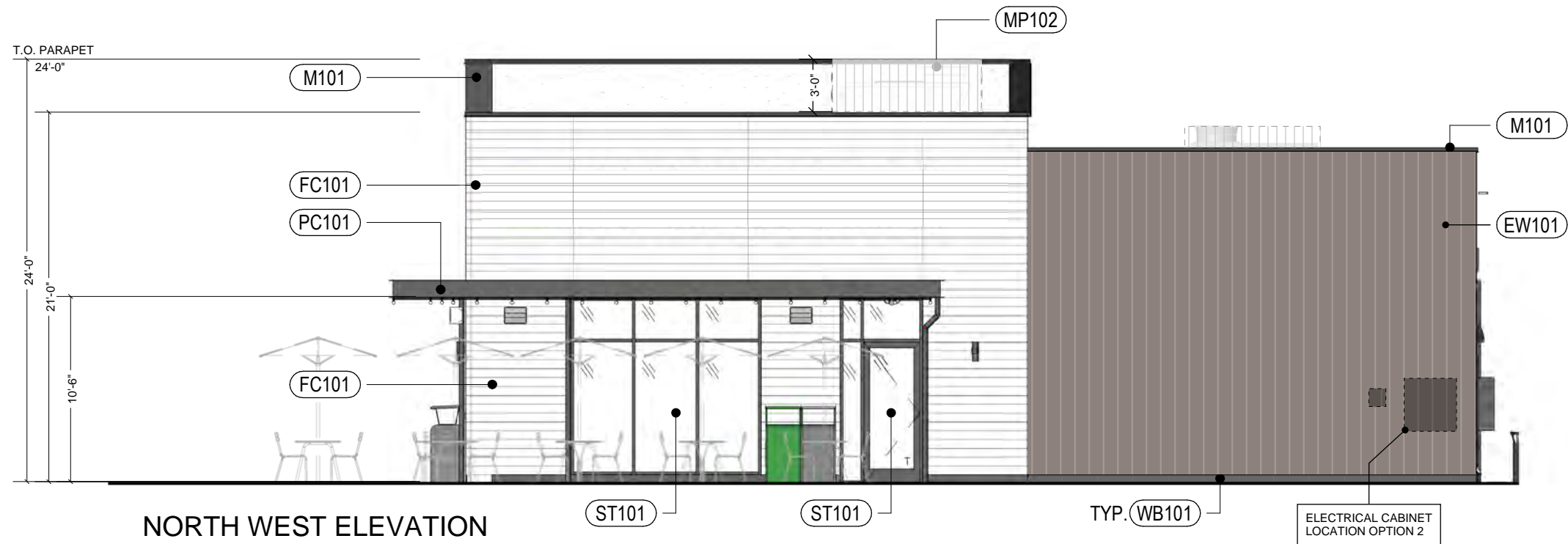


**TYPICAL SITE & EXTERIOR**



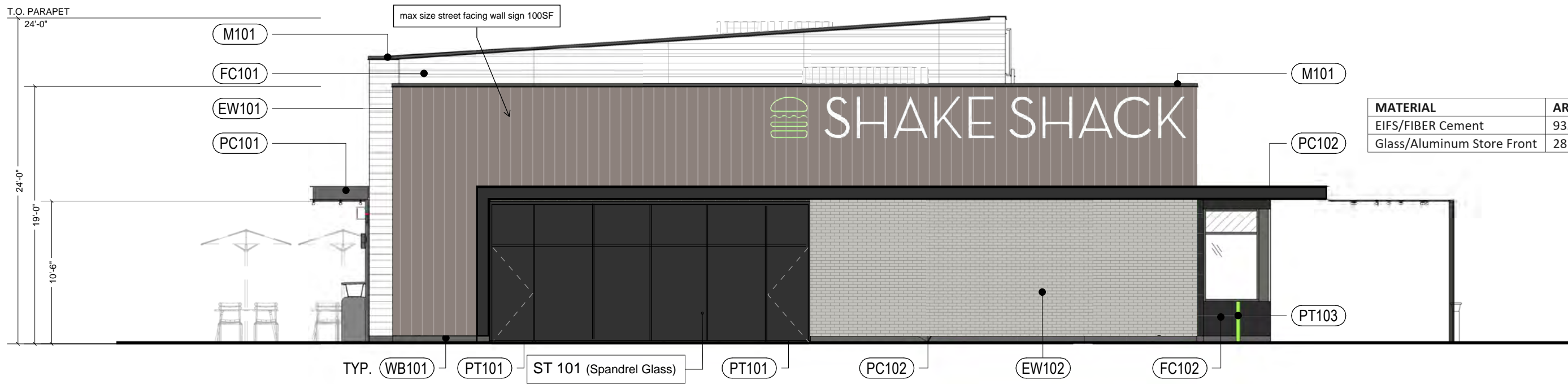
MATERIAL	AREA	%
EIFS/FIBER Cement	1086 SF	78%
Glass/Aluminum Store Front	305 SF	22%



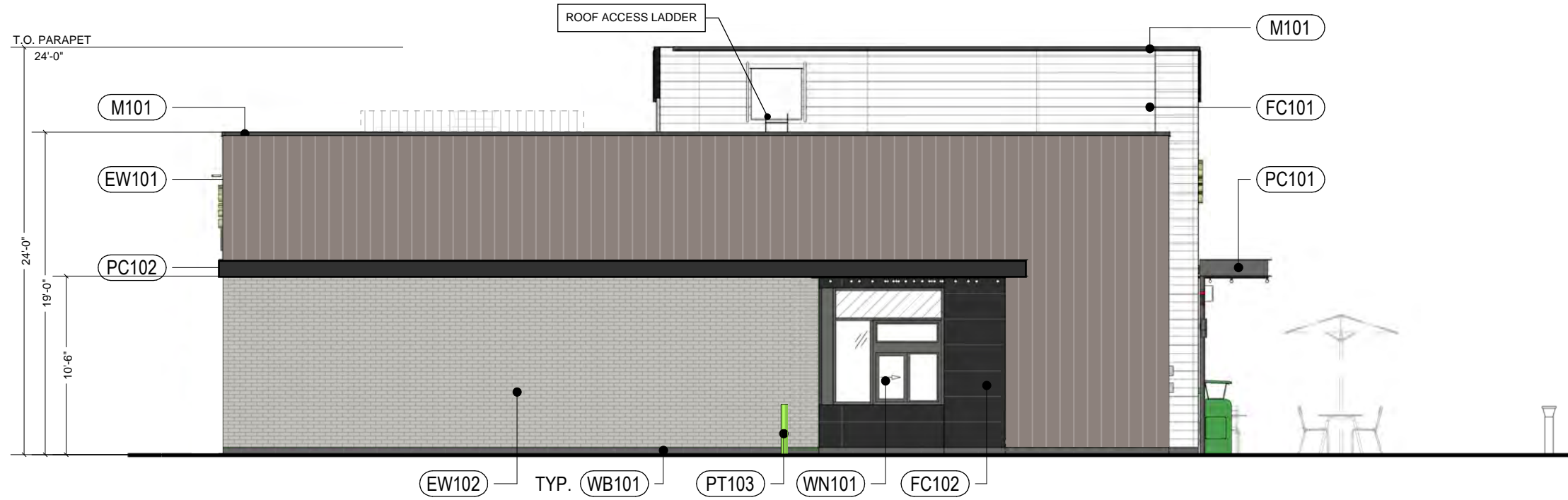
MATERIAL	AREA	%
EIFS/FIBER Cement	1002 SF	86%
Glass/Aluminum Store Front	158 SF	14%

**RECEIVED**  
 MAY 19 2023  
 RZ-23-0001, VC-23-0002, VC-23-0003  
 PLANNING & ZONING

TYPICAL SITE & EXTERIOR



SOUTH WEST (STATE BRIDGE ROAD SIDE)



SOUTH EAST ELEVATION (PICKUP WINDOW SIDE)

MATERIAL	AREA	%
EIFS/FIBER Cement	1061 SF	95%
Glass/Aluminum Store Front	50 SF	5%

**RECEIVED**  
 MAY 19 2023  
 RZ-23-0001, VC-23-0002, VC-23-0003  
 PLANNING & ZONING

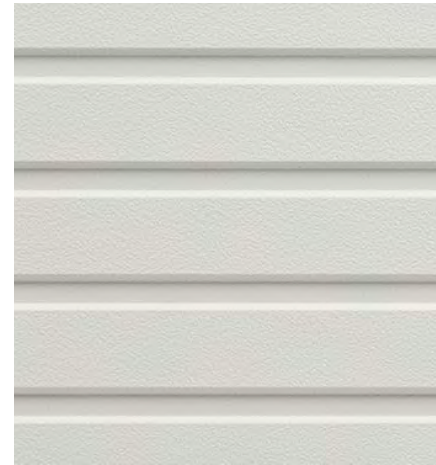
**TYPICAL EXTERIOR FINISH PALETTES**



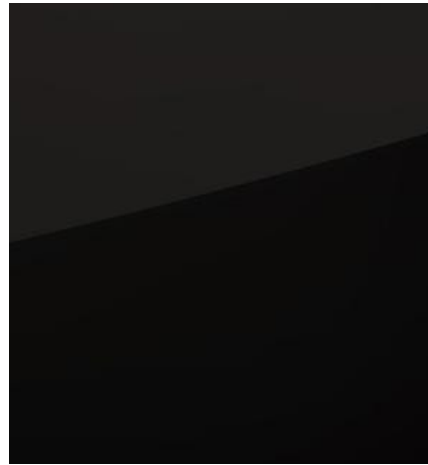
MP101 - METAL BATTENS  
Knotwood 'Batten System', White Ash  
Vertical



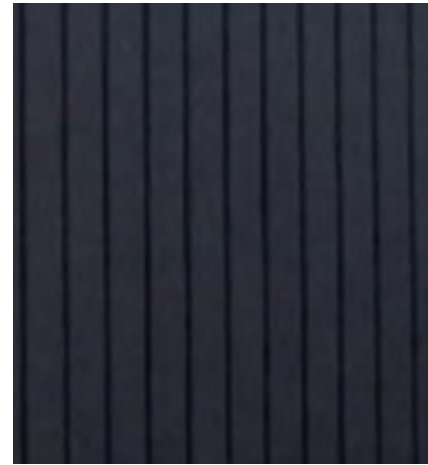
MP102 - METAL PANEL MECH SCREEN  
Cityscapes 'Envisor 7.2 Vertical Solid',  
PANTONE CG1U



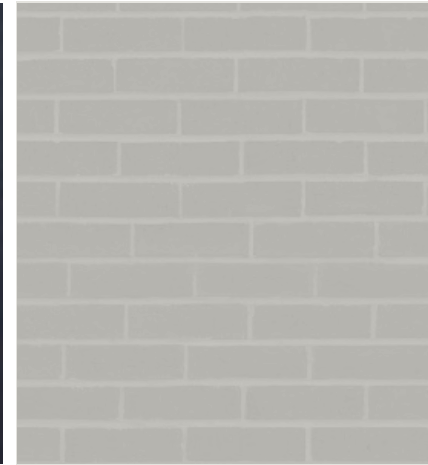
FC101 - FIBER CEMENT RAINSCREEN  
Nichiha 'Ribbed', Ivory  
Horizontal



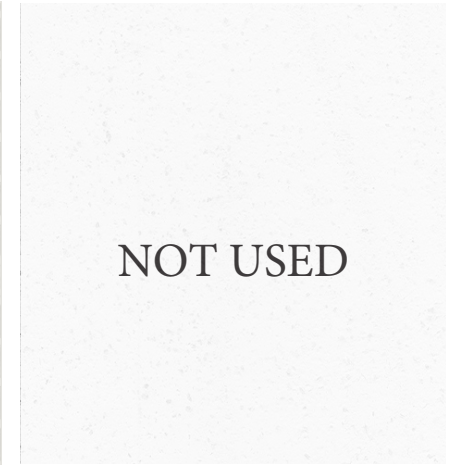
FC102 - FIBER CEMENT SIDING  
Nichiha 'Miraia', Onyx



EW101 - EIFS W/ VERTICAL RIBS  
Dryvit 'Outsulation Plus MD', Match  
PT101 color, Vertical



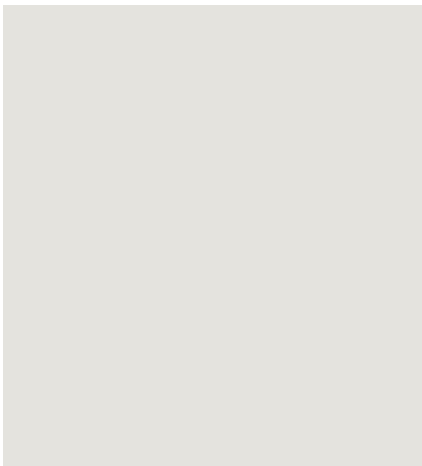
EW102 - EIFS BRICK  
Dryvit 'NewBrick', Color Integrated to  
Match PT102



EW103 - STONE FINISH  
Dryvit 'Tibur Stone', Standard Grey



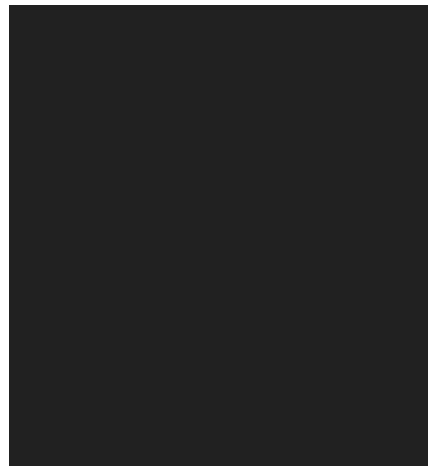
PT101 - PAINT  
PANTONE WG8U



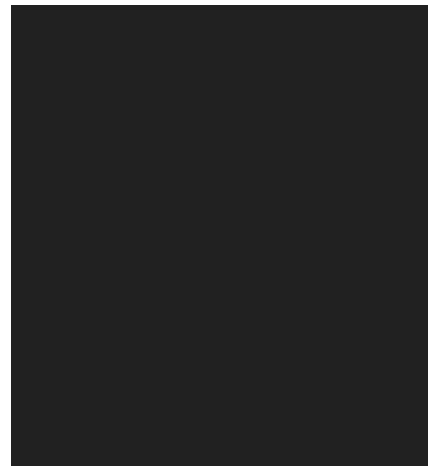
PT102 - PAINT  
PANTONE CG1U



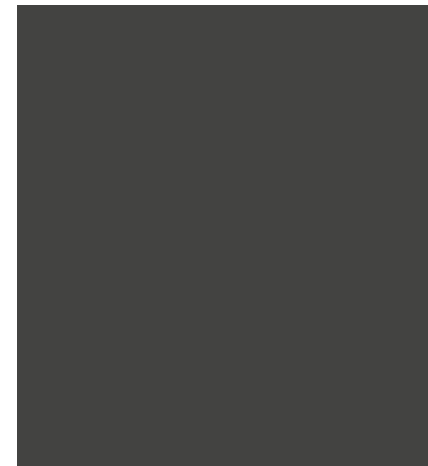
PT103 - ACCENT PAINT (BOLLARD)  
Sherwin Williams 'SW6923 Festival  
Green'



ST101 - SF/EXT DOORS  
Kawneer 'Trifab Versalage 451T'/  
'500 Tuffline', Black anodized



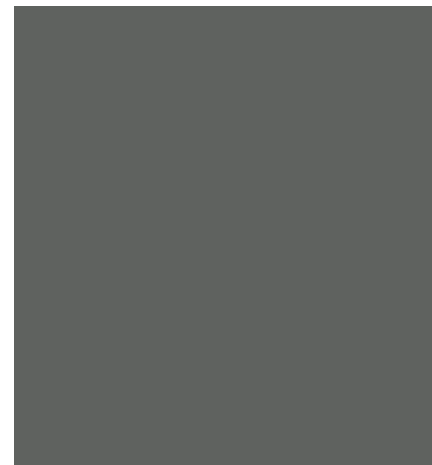
M101 - EXTERIOR COPING  
PAC-CLAD 'Metal coping',  
Match ST101



PC101 - ALUMINUM CANOPY  
Mapes, Prefinished to Match PT101



PC102 - ALUMINUM C-CHANNEL  
Mapes, Prefinished to Match PT101



PT104 - ACCENT PAINT  
PANTONE 447 U



WB101 - PORCELAIN WALL BASE  
Mosa 'Quartz' Anthracite Black  
4104RQ 24"X24" (6" Base)

**RECEIVED**  
MAY 19 2023  
RZ-23-0001, VC-23-0002, VC-23-0003  
PLANNING & ZONING



R5 - RECESSED DOWNLIGHT  
Liteline 'RA56-3W-BK-WH'



ST1 - ALT DOWNLIGHT (STRING)  
American Lighting 'LS2-MS-24'



SC1 - EXTERIOR SCONCE  
Lumiere Lanterra '9004-W1-DOWN-  
RW-LED3090-W-BK-L2-UNV-WRS'

**EXTERIOR FINISH PALETTE**